

GWRRA CHAPTER - M

SOUTH CENTRAL REGION "H"

TEXAS DISTRICT

ARLINGTON, TEXAS



THE MOONLIGHTERS

April 2007



§§ OFFICERS §§

CHAPTER DIRECTOR

Warren and Cindy Burt
817-428-8720
wcburt@sbcglobal.net

ASST. CHAPTER DIRECTOR

Marvin and Sylvia Andrews
972-647-8395
marsyland@sbcglobal.net

ASST. CHAPTER DIRECTOR

Rowdy and Joanne Hickox
817-447-1101
jhickox95531@msn.com

ASST. CHAPTER DIRECTOR

TBD

CHAPTER EDUCATORS

Jim and Vicki Carpenter
jcvic@tx.rr.com

COY

Larry and Rhonda Jennings
goldwing@flash.net

CD's Corner

By the time you read this, the Region Rally that was held in Marshall, Texas will be over and we will be getting prepared for our next events. I'm looking forward to my first ERC Course in nearly three years, and hopefully getting back on board with the Rider Education Program. Both Cindy and I are striving to get to the level IV soon.

We are really looking forward to some great rides now that warmer weather is here. Don Vickers and Lonnie Ellis have volunteered to lead

rides in early April, and then Rowdy Hickox will be leading us on the much anticipated Alpine-Big Bend Adventure the 19th through the 22nd. That should be great fun! At the end of April we have a ride to Brownwood for O2's annual rally. A couple of years ago we saw a tremendous amount of wild flowers on the poker run there.

We start the May calendar with our monthly meeting on the 3rd, then a breakfast ride and a "Bug Run". Hopefully, we will see a few bugs this year, or maybe not!

§§ STAFF §§

TREASURERS

Craig and Mary Watkins
940-648-2028
watkinsc@gte.net

WEB PAGE

Charles McConnell
817-451-5196
poochdwg@gmail.com

NEWSLETTER EDITOR

Sherry Myers
817-375-9294
wingrider59@sbcglobal.net

RIDE COORDINATOR

Sam Smith
817-477-2630
smithauctionmgt@swbell.net

PHONE TREE

TBD

HISTORIAN

Sheila Penney
817-444-3134
sheila@dpenney.net

SUNSHINE LADY

HAROLYN ELLIS
817-472-8958
ellisbikerbabe@yahoo.com

MEMBERSHIP COORD

Marvin and Sylvia Andrews
972-647-8395
marsyland@sbcglobal.net

WEB PAGE: <http://www.txmoonlighters.com>

Then on May 17th, the District Rally at Wichita Falls starts. I always enjoy the district rally a lot, and am really looking forward to this one. I hope we have a big turnout, with lots of "M"ers having a great time.

As you can see, our Chapter M calendar schedule is getting full and exciting. The warmer weather and bright sunny skies of Spring (we hope) make us all want to ride, ride, ride!!

See you soon, FTEB (full tank/empty bladder) for all of you who don't know the lingo!!!

Warren

Be sure and check out the web site for the latest pictures news and chats with fellow Mer's. Charles is continuously adding to the site.

Congratulations and thanks to Rhonda and Larry Jennings for Couple of the Year for Chapter M. They will be a great addition to the staff.

Rhonda and Larry will be putting together the COY basket for the District Rally in Wichita Falls in May. If you have ideas or suggestions of items to go in the "M" basket or items to donate for the basket please let them know by emailing to goldwing@flash.net.

We know you guys will do Chapter M proud.

Find your GWRRA Number in this Newsletter and you can win a free Raffle Ticket if you show a current GWRRA Membership card to the CD at the Chapter M meeting. There are two GWRRA numbers in this newsletter.

Ye Ole Ride Schedule

April

ERC Course Burleson High School	Sun	1 st	TBD	1:00 PM
Chapter Meeting	Thurs	5 th	Spring Creek	7:00 PM
Lunch Ride Don Vickers Leads	Sat	7 th	LV FINA	10:00 AM
Staff Meeting	Wed	11 th	Spring Creek	7:00 PM
Lunch ride to Athens Lonnie Ellis leads	Sun	15 th	LV FINA	9:00 AM
Big Bend Ride Rowdy Hickox Leads	Thurs	19 th	LVFINA	7:00 AM
Chapter O2 Rally Brownwood	Sat	28 th	LVFINA	7:00 AM

May

Chapter Meeting	Thurs	3 rd	Spring Creek	7:00 PM
Breakfast Ride	Sun	8 th	LV FINA	8:00 AM
Bug Run	Sat	12 th	LV FINA	6:00 PM
District Rally	Thurs	17 th	Western Center	8:00 AM

Check the web site for more ride information

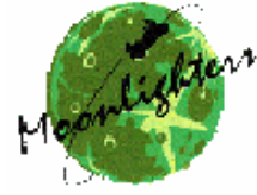
FINA Station - 1721 FM 157 West of US-287, Mansfield, TX

**Chapter Meeting 1st Thursday of each month,
Dinner at 6:00 PM Meeting at 7:00 PM**

Spring Creek Barbeque, 1724 HWY 287 (at Debbie Lane), Mansfield, TX



April 2007



GWRRA Chapter M Events

Sun	Mon	Tue	Wed	Thu	Fri	Sat
1 ERC Course Burleson H.S..	2	3	4	5 Chapter meeting 7 pm Spring Creek	6	7 Lunch Ride Don Vickers leads 10am LVFINA
8 Easter Sunday	9	10	11 Staff Meeting Spring Creek 7pm	12	13	14
15 Lunch ride Lonnie leads 9am LVFINA	16	17	18	19 Ride to Big Bend Rowdy Hickox leads LVFINA 7 am	20	21
22	23	24	25	26	27	28 Chapter 02 Rally Brownwood LVFINA 7 am
29	30					



May 2007



GWRRA Chapter M Events

Sun	Mon	Tue	Wed	Thu	Fri	Sat
	fast	1	2	3 Chapter Meeting 7 pm Spring Creek	4	5
6 Breakfast ride LVFINA 8 am	7	8	9 Staff Meeting 7 pm Spring Creek	10	11	12 Bug Run LVFINA 6 PM
13 MOTHER'S DAY	14	15	16	17	18 Texas District Rally Witchia Falls Leave Western Center 8 am	19
20 Imprompto Ride LVFINA 10 am	21	22	23	24	25	26 Lunch Ride LVFINA 9 am
27	28 Memorial Day	29	30	31		

SPECIAL DATES

April 2007

Birthdays

Bonnie Lowery	3 rd
Karen Olsen	11 th
Fay Tolson	13 th
Gene Lowery	17 th
Harolyn Ellis	17 th
James Barnett	27 th
Carmen Alford	28 th
Nancy Gardner	30 th

Anniversaries

John & Peggy Turner	1 st
Ken & Karen Olsen	13 th
Larry & Daisy Kohls	18 th
Rick & Ida Bierman	20 th
James & Sandy Barnett	30 th



FRED WORTHEY INSURANCE AGENCY

700 Highlander Blvd., Ste. 402
Arlington, TX 76015

Toll Free: 1-800-582-8462

E-mail: fworthey@farmersagent.com

Fax: 817-465-4445



What is it???

There is a new dance in town
and it is called the

...MOONLIGHTER'S MINGLE...

Come to the meeting this
month and find out all about it
!!! don't be the only one.... Not
doing the

....MOONLIGHTER'S
MINGLE....



SUNSHINE

REPORT...

Hello fellow M'ers. Hope this has been a great month for you. Spring is here and this is supreme riding time for us. March was filled with some great times and good roads. I hope that you are getting geared up for some more of that great riding.

Last month also saw more people at the rides and at the meetings-as the winter chill disappeared under the sunny skies of spring. Our officers have planned a calendar full of exceptional riding for the month of April. Make sure to try to fit the Big Bend Ride into your plans if at all possible. I can't wait to go and I am already packed. (I am taking lots of Tylenol, extra pillows and muscle cramp medicine for those aches and pains from riding so far). Hey I am a softie... I admit it !!!

See you at the rides !!!!! And as always... Let Lonnie and I know how we can better serve Chapter M !!

Sunshine

King-of-the-road coverage
shouldn't cost a king's ransom.
That's our stand.



Call me today for our new policies that cover more
bikes at lower rates.

(972) 206-0920

Anita Embry

2986 S Highway 360

Grand Prairie

AnitaEmbry@allstate.com

Call or stop by for a free quote



Allstate.

You're in good hands.

Insurance and discount subject to availability and qualifications. Allstate Property and Casualty Insurance Company, Northbrook, IL ©2006 Allstate Insurance Company.

Did You Know....

Caddo Lake is the only natural lake in the state.

Dr Pepper was invented in Waco in 1885. The Dublin Dr Pepper, 85 miles west of Waco, still uses pure imperial cane sugar in its product. There is no period after the Dr in Dr Pepper.

Forty percent of the farm-grown catfish in the United States is consumed by Texans.

One of the lenses at the University of Texas' McDonald Observatory (in Big Bend National Park) has a nick in it because a worker there got mad at something and shot at it.

Big Bend Facts....

In preparation for April's ride to big Bend here are a few facts :

- This huge park encompasses 801,163 acres
- The Chisos Basin is at an elevation of 5,400 feet
- More than 1,200 plant types are found in the park.
- More than 450 bird species have been identified-more than at any other national park.
- More than 100 miles of paved roads and about 170 miles of dirt roads are in the park
- One hundred million years ago, this area was ocean. And 65 million years ago, dinosaurs roamed the area.

EXPERIENCE THE FREEDOM



- Come see the ultimate in Luxury & Sport Touring Bikes
- Complete line of Honda Motorcycles, Scooters & ATV's
- Huge inventory of Honda parts & accessories



YAMAHA - HONDA - KAWASAKI

673-4636 1-800-777-0214

941 N. Mockingbird • Abilene • www.maxscycle.com

Riding and Dealing with Crosswinds

An exercise in counter-steering

As anyone who has lived in Texas very long knows, as the warmer weather of spring comes so do the winds. It seems to me that the weather folks plan the nicest days to be extra windy just to mess up your plans for getting outdoors. I guess if we waited for perfect conditions we would not get the bikes out nearly as much as we like which leads me the subject of this article. Cross winds - Vicki and I would be riding along and it would get gusty -- we'd slow down and ride it out -- weaving in our lane (mostly) and slowing down if it got too windy. That was no good -- traffic comes up behind us, we're not stable -- it just wasn't safe all around. I'm sure a number of people have felt the same. What do you do? Wait until the wind stops? If you're going cross-country or just out for a day ride, this isn't an option. If you wait for the wind to die down or for it to stop raining, you'll never make it out of Texas, let alone make it to Montana!

Riding in cross winds is simply another exercise in counter-steering. Slowing down doesn't help; it makes a difference psychologically, but the wind still blows you all over the road. What is needed is to find a way to counter the wind effects on the line the bike tracks down the road so as to maintain a straight line regardless of speed and wind direction. You can't 'lean' quick enough to make up for a gusting 20 mph wind, but you can push on the handlebars that quick. One other thing that you may do to make the experience less stressful is for example; you can quit white-knuckling your grips. When you hold on tight you also tend to stiff- arm your controls. That merely allows front-end instability to transmit into the rest of the motorcycle. Relax your grips and droop your elbows.

When the wind blows from the side, counter steer into it. In the same way that you push left to go left, if you have a cross wind from the left, you want to push on the left bar and counter-steer into the wind to maintain a straight line. This is not a sudden extreme 'push-push' as counter-steering to avoid an obstacle, but a continuous gentle (maybe subtle would be a better description) pressure on the handlebar that the wind is blowing from. This will lean you into the wind to counter the wind's push and maintain your straight line down the road. When the wind blows harder, it takes a little more pressure on the bar on the side that the wind is coming from. One key point is to worry about the path you're taking down the road, not the angle that the bike is at. Just let the bike lean and only worry about the path you're taking down the road and the amount of pressure on the handlebars to maintain that path. If the wind is gusty or you come under an underpass or pass an 18-wheeler on the lee side, that pressure will have to change with the wind conditions, so stay alert. With a little practice, you'll be sailing that bike down the road.

It's not easy riding in a gusty cross wind, but it is not impossibly difficult either. It is simply a matter of knowledge, education, and experience. (What part of motorcycling is not?! ;-)) So the next time the winds pick up, try a little counter-steering before you get off the gas and/or call it a day.

Jim & Vicki

Rider Ed

Other Area Chapter Meetings

- "B/N" 7:00 PM on 2nd Tuesday, Spring Creek, Garland, Dallas
- "F2" 7:00 PM on 1st Tuesday, Luby's Cafeteria, 251 University Dr., Ft. Worth
- "P" 7:00 PM on 2nd Thursday, Spring Creek 317 Hwy 377 @ Overton, Granbury
- "R" 7:30 PM on 4th Tuesday, Fuddruckers (near Bass Pro Shop), Grapevine
- "U2" 9:00 AM on 3rd Saturday, Golden Corral, 1120 William D. Tate, Grapevine
- "W2" 7:30 PM on 3rd Thursday, Fire Mountain, 1400 N. HWY 77, Waxahachie
- "Z2" 7:00 PM on 4th Thursday, Steak Kountry, 153 Westgate Shopping Center, McKinney

The Region H Rally

This was Fred's first Region H Rally and mine and we were not sure what to expect. Everybody told us we would have a lot of fun and there were right. Friday morning dawned cloudy and it looked like it would rain just any minute, but we loaded the bike and took off to meet everyone at the Fina. There were nine bikes that left from Fina with the group meeting the Andrews and the Watkins in Grand Prairie. Now eleven bikes strong we are on I20 and east bound and down. Warren is leading and Lonnie tail gunning and both always do a great job.

We roll into Marshall and hit a local favorite for lunch. After a great meal it was down to the Civic Center to check in at the rally and pick up our assignments for security. A number of vendors were present with everything from pin stripping and air bag jackets to cling for the ladies.

Everyone does their 30 minutes of security and break up to check in to our hotels. We all meet for dinner at a great Italian restaurant and after dinner it was time for fun and games. A hot game of Chicken Foot is started and as it progressed people would take breaks and fill in for others. At one point Fred was Warren, Sylvia was David Topley, Marvin was Carolyn and Charles was Harolyn. Everyone teased each other and had a great time.

The next morning we all met at the rally and head off to see sights around Marshall. Warren leads us on a great ride with lunch at a catfish restaurant with excellent food, then a stop at a hardware store that is several decades old. It had great old antiques and even a few things for sale. We move on the great country roads with Dogwood blooming and Wisteria growing wild to



**EMBROIDERY SPECIALISTS
OF TEXAS**

Craig & Mary Watkins
GWRRA Members
serving Chapters & Members Nationwide
State-of-the-Art computerized equipment

www.EmbroiderySpecialistsOfTexas.com
info@EmbroiderySpecialistsOfTexas.com

940-648-2028 940-648-2031 fax

Caddo Lake. Several people thought the lake spooky with the cypress trees and Spanish moss hanging. We continue on and stop in Jefferson the oldest settlement in Texas. It had great shops and everyone enjoyed all the items for sale.

Back to Marshall and to the hotel for a rest before the closing ceremonies. Shelia Penny had entered the chapter banner and scrapbook. The Chapter scrapbook took 3rd place in the competition. Congratulations to Shelia. After dinner everyone calls it a nigh tomorrow it is time to head home and an early start.

Sunday is foggy and cloudy when we meet for the ride home. Lonnie is leading and out of the parking lot we make a wrong turn. As most wrong turns turn out it was a great two-lane road that wound thru the countryside and back to the hi-way. What a great way to start the ride home. Most stop in Lindale for breakfast but a couple of bikes head on for home to beat what looks like a rainy ride home, Thankfully no rain. Thanks to all who made the weekend great fun and we look forward to the rally in Wichita Falls in May. Fred and Sherry Myers

B BROOKE INSURANCE

Call Toll Free **1-866-77-AGENT**

Locally Owned & Operated by K. Lynch & Associates, Inc.

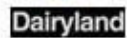


Your Motorcycle Insurance Professional

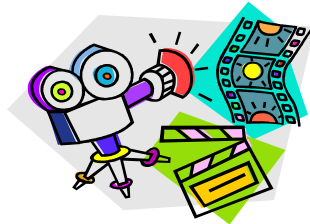
Contact **Kevin M. Lynch, GWRRA Member 222269**, at **Brooke Insurance & Financial** for your Motorcycle Insurance needs.

Kevin offers motorcycle coverage through many of the top insurance companies available in Texas.

K. Lynch & Associates, Inc. is a full service, independent insurance agency owned by Kevin & Kim Lynch.



817-999-6371(Phone) 817-557-2584 (Fax)
kevin.lynch@brookeagency.com



CHAPTER M AT THE MOVIES!!

Riding together is what Chapter M is all about. However, recently we have been spending more time involved in off bike events as well. We had the bowling tournament, the First Aid class, Road captains course as well as meetings. On March the 3rd, we also got together to go see the premier of WILD HOGS- a movie about mid life crisis and taking a road trip for freedom. It was fun and seeing all those green shirts in the theater was a blast. Of course we were a tad noisy, but tried to keep it down to a mild roar. A total of 20 folks showed up and everyone said they were glad they came. No matter how old you are, going to the movies is always more fun with friends!! It was also a treat to see Debby Fuller out and about, as well as Sue and CL Scott. We are always open to ideas for rides as well as off bike events... so if you have an idea to share please let us know. *Lonnie*

A Motorcycle

A poem by Katelynn Correll

A Motorcycle has a motor
Some are Black, Red and Green
Some are toys and some are real
A Motorcycle , A Motorcycle
A Motorcycle is real and green
A Motorcycle, A Motorcycle
A Motorcycle can Vroom, Vroom
A motorcycle Yeah!

The above poem was submitted by Katie age 6 and like most children is fascinated by motorcycles.

SPOTLIGHT ON THE CHAPTER



Wear'n Of the Green

St. Patrick's Day 2007 and Chapter M proudly displayed our green. Sam Smith has made arrangements for Chapter M to ride in the St. Patrick's Day Parade in Dublin, Texas of course, as the Parade's Grand Marshall.

Chapter M gathers before dawn for a ride to Dublin located about an hour and half south of the Metroplex out Hwy 377. Sam lets us know that this is maintenance ride simply designed to get us there. We will be picking up more M'ers as we go but not stopping until we reach Dublin. Twenty-one bikes leave out and head south, it's not long before the first bike to join our group has fallen in and we continue. Thirty minutes later and the second bike has joined us and now we are twenty two strong. Rolling into Granbury we gather the last of the bikes to join and now rolling south we are thirty- one bikes total. Things are going great, the traffic is light and the dawn is quite pretty although a little cool. As we near Dublin Sam comes on the radio, he wants the group to tighten up as we role into Dublin. He warns us that currently we are longer than the entire parade route and we may actually be the parade. Dublin is a small town and Sam's not sure how many people will turn out for the parade. Chapter M rolls into town and lines up on a side street to decorate and prepare for the parade. In a short time all the bikes are decorated in their finest greenery with

with streamers, shamrocks and assorted beads. Even Tex, Charles McConnell's bear is wearing green and looking festive. We have green hair, green glasses and green hats. Chapter M is dressed in our green shirts and hoping the weather warms enough to pull off our jackets for the parade. We even had our own Irishman complete in his kilt. His clan is the Duncan's and he was wearing his clan colors of blue and green plaid. It is time to mount up and start, Don and Charlene Vickers lead carrying our chapter banner followed by Cindy and Warren Burke. The chapter falls in 3 and 4 wide and we roll down Main street tossing candy to the kids lining the parade route. Both sides of the street are lined with people and the crowd really likes the parade. We turn left and head for the city park were the town has set up booths and rides for a daylong festival to celebrate St. Patrick. (101910)

We pull into the parking lot and it is photo time (quite a challenge with that many bikes and M'ers.) The parade organizer stops to thank us for participating and to wish us a safe journey home. A few minutes to look around and it is time to go and eat lunch. Sam has picked a great restaurant once again and they do a great job serving forty-five of us. After lunch we head back home and close another great day of riding.

"Erin go Braugh"
Fred and Sherry



The First Adventure of Miss Kitty

I was resting quietly, in what I guess is my new home and I heard a noise. It was a man's voice talking to a woman about the temperature outside. Then the door opened and there stood a man and a woman walking toward me all dressed up like skiers off to the races. The woman came toward me and said it's going to be a little cool today Miss Kitty, I hope you are ready. The garage door opened and we rolled out of the driveway, down to the street. I thought it is really cold out but a few miles down the road I will warm up, so let's roll. We left Juniper Dr. to Matlock on down to the local gas station, where I could get me a big drink that would last me for a while. Then down Sublet just a ways and turned left on Cooper. At this point I was beginning to agree with my driver it was really cool, then I hear my driver say its how cold. yes I hear right it was a cool 28 degrees outside. This might freeze my new pipes off. Then we pulled off the road where there was this one Goldwing waiting on us. I knew it was a wing because me and big guy, Green Feather, talked back in the garage, he said he was a Goldwing and he had lots of friends that we would be hanging out with. The drivers talked to each other while Green Feather introduced me to the other Wing that was waiting when we arrived. Before I knew it there was someone else to join us in our conversation, he said, he was a Trike, this was really cool, kind of like the weather. Before I really got to know anyone we were puling out heading out to Hwy 287 north. The wind blowing on me felt good. It is a cycles dream to be on the highway, the wind on our windshield. We went down to Hwy 156. Then over to FM2450, then left on Gregory Rd. By this time the riders were starting to complain about the cold and wondering where oh where is that Wooden Spoon, we need somewhere warm to stop. But we traveled on County Rd 365. Then right on Hwy 51. The drivers said not long till breakfast and it was a nice 48 degrees outside. I thought it was warming up. We then turned left on FM1630, right on FM3108 then I blinked once and we were being parked. It's a good thing I wanted a little break. (62672-01)

After hanging out with the wings, my new friend Waldo, he's the Trike and boy can he tell some stories. My favorite is the one where he was planning on going to The Ditch and he suddenly came down ill. I didn't get to hear the end of the story. My new owner and all her friends came out of the restaurant all talking about me. About the time I was getting all proud ,we got cranked up and we were all running down the road. We left Lindsey heading down Hwy 82 West. All the drivers decided we all deserved another big drink since we all had been so good all morning. Then we headed on down the highway to a place they called St. Joes. It has a motorcycle shop there, I wondered for a minute if there were other cycles there, and then I heard the drivers say they were going to check on gloves and patches. Oh well I can make more new friends later. After the stop at St Joes my driver was very happy she got new gloves and she was ready to travel. So we traveled on down H wy82 to Hwy 677 south to Forestburg picked up Hwy 455 south to Hwy 51. Boy these folks like to ride and the sun was really feeling good. About that time I hear one of the drivers say not to far there is a Starbucks up the road. What's a Starbucks? Waldo told me it was just another one of their favorite stops. I would soon learn there are lots of those with my new friend. So we ran down the road a bit and we stopped at their Starbucks and they were all happy after a days ride and my new owner is so proud. This just makes my chrome shine. After a little nap in the parking lot the drivers said their goodbyes and we were going down Hwy 287 south back to my new home where I know I am going live for a very long time. As told by Miss Kitty to Rhonda Jennings

Did you Know.....

Currently, women motorcycle riders make up about nine percent of all riders.

Some of the first recorded women riders were, Avis and Effie Hotchkiss a mother -daughter team. In 1915 they rode from New York to San Francisco. They didn't take the direct route. Instead, they meandered about, covering 5,000 miles.

CYCLE DAVE'S
379262

2750 N. Main



Mansfield, TX



(800) 256-7614

Metro (817) 572-0381

(817) 478-8870

All major credit cards accepted
OVER 20 YRS IN SAME LOCATION Closed Sun-Mon
Hrs. Tues-Fri. 9 am-6 pm Sat. 9am-4pm Free Donuts/Coffee Saturday morning

TMRA & GWRRA DISCOUNTS

SPECIALIZING IN GOLDWING AND CRUISER ACCESSORIES

SERVICE ACCESSORIES SALES

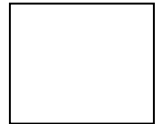
SUPPORT THE SHOP THAT SUPPORTS YOUR SPORT

"We Are Different"

<http://www.touringspecialties.com>



Warren and Cindy Burt
Chapter "M" Directors
7545 Terry Dr.
Ft Worth, TX 76180



This Newsletter Especially For.....

